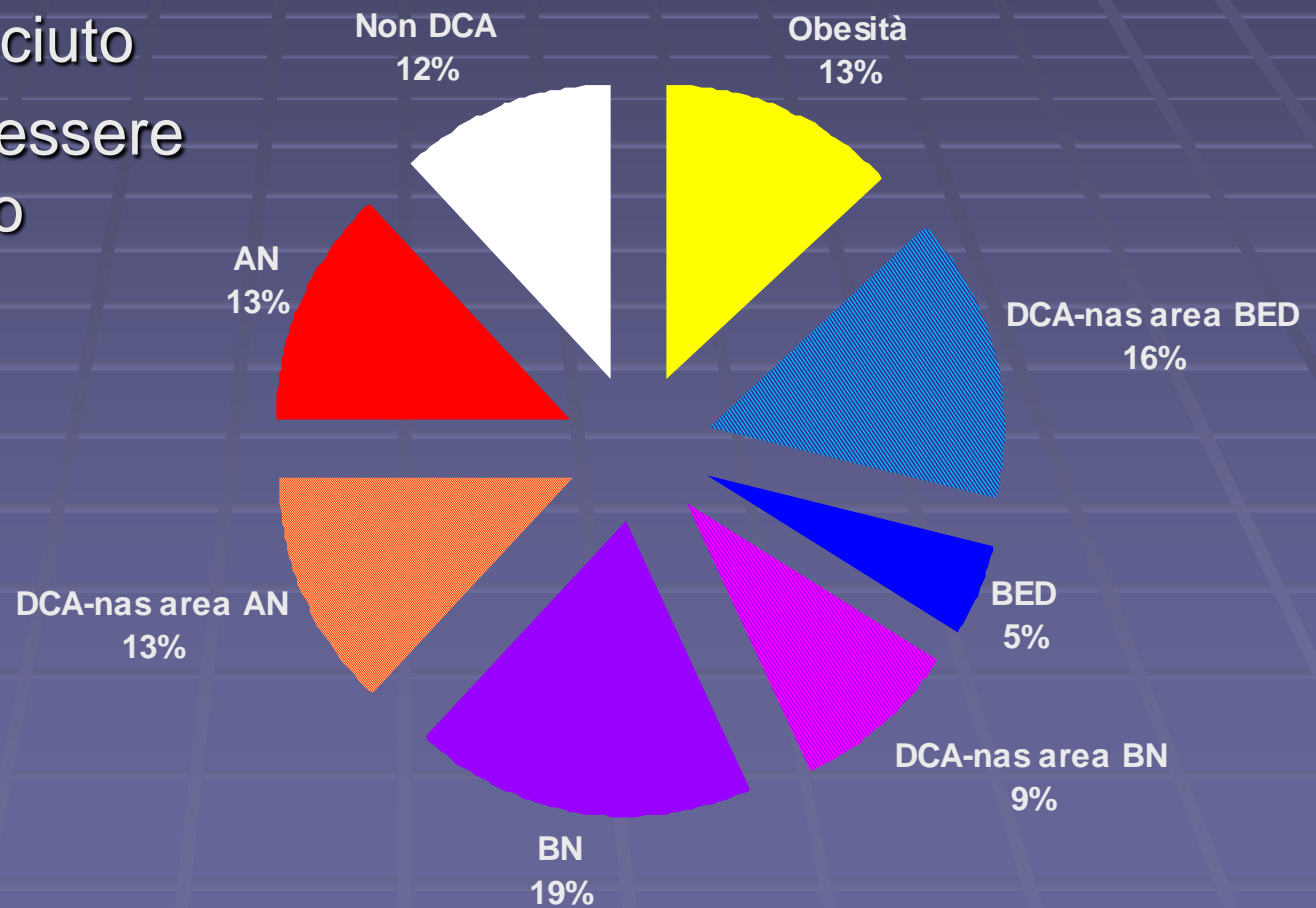


Geni ed epigenetica, neurotrasmettitori e recettori, l'anoressia dal punto di vista del biologo

Prof. Daniele Gigli
Gruppo di neurochimica del comportamento
Università degli studi e-campus

Anoressia nervosa

- DCA
 - Più conosciuto
 - Primo ad essere identificato



Pillole di storia

- Medioevo
 - 1500 Simone Porta
 - 1689 Morton
 - 1850 Marcè
 - 1860 Lasegue
 - 1968 DSM-II
-
- Seconda metà del '900

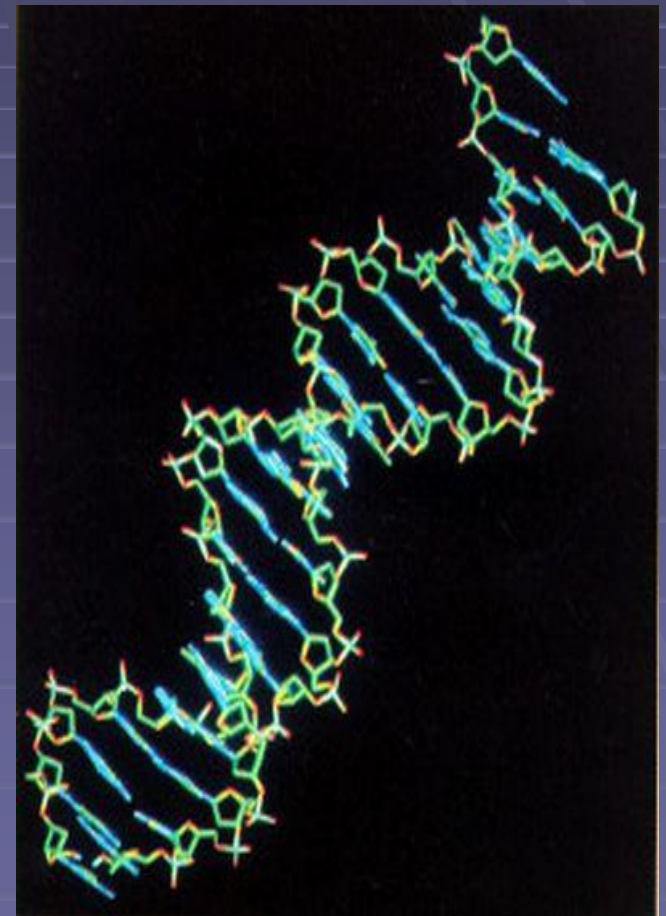
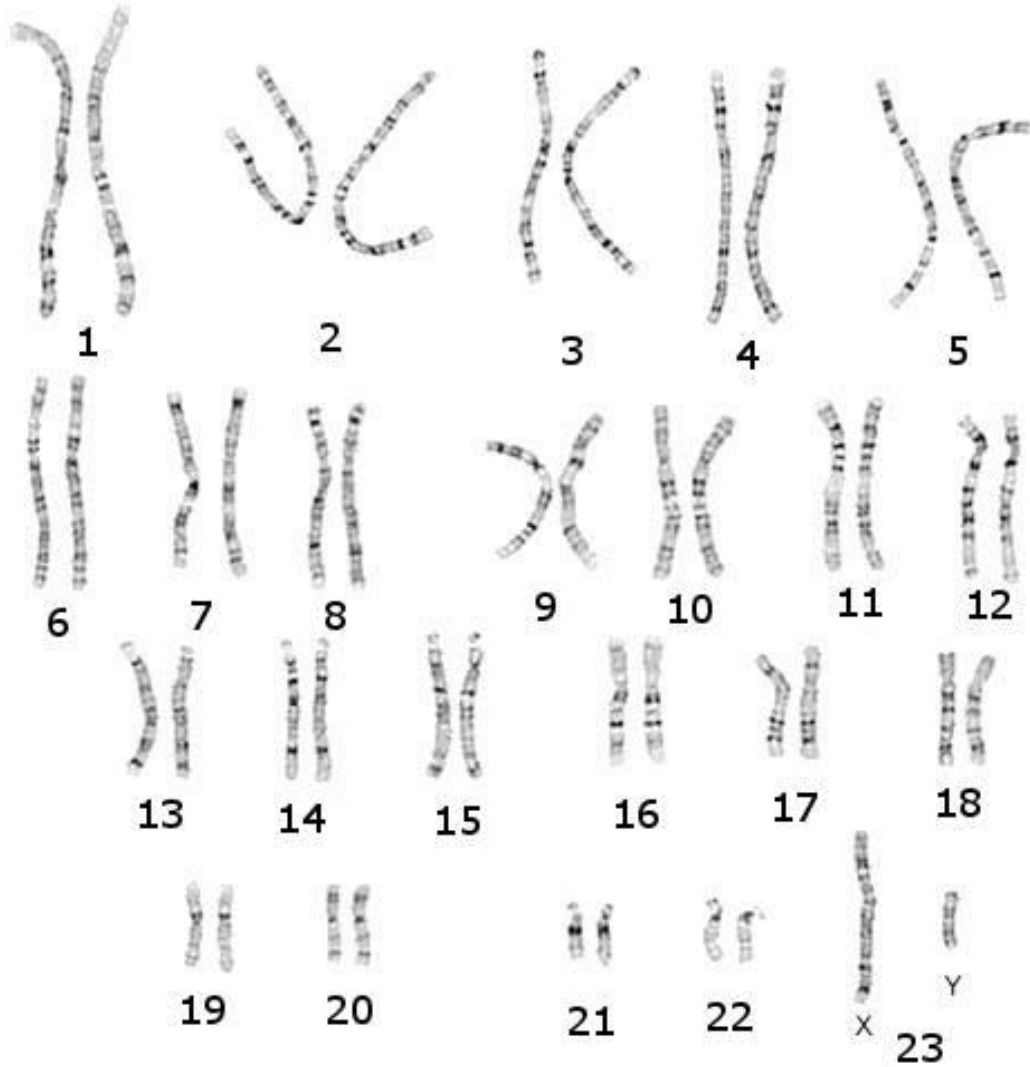
Biological

Social

DCA

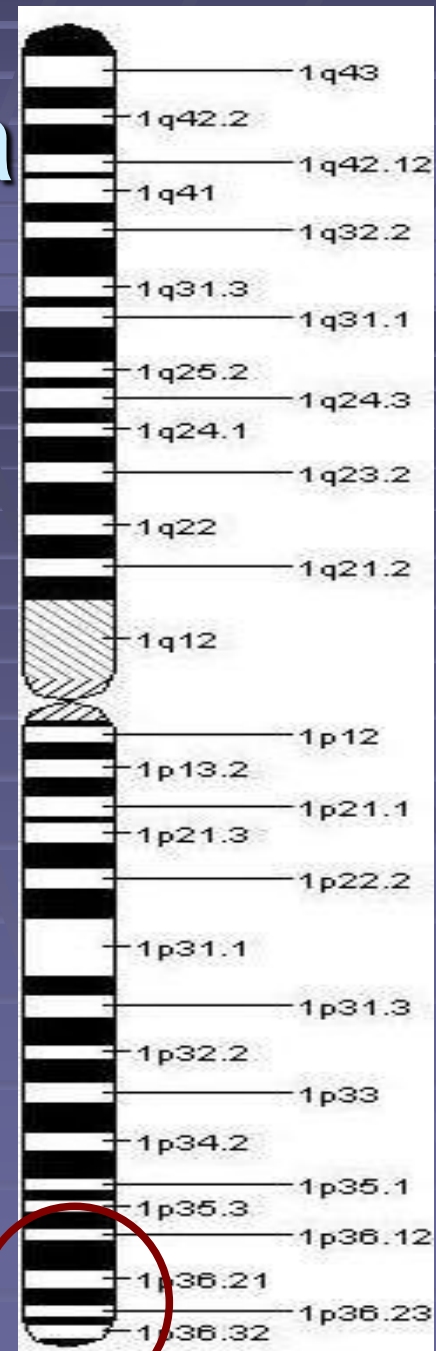
Psychological

Fattori biologici: geni



Studi di ereditabilità

- Studi sui gemelli: 58%-74%
- Indice di Massa Corporea
- Sintomi: 32%-72%
- Linkage sul cromosoma 1



SPECIAL EDITION

SCIENTIFIC AMERICAN



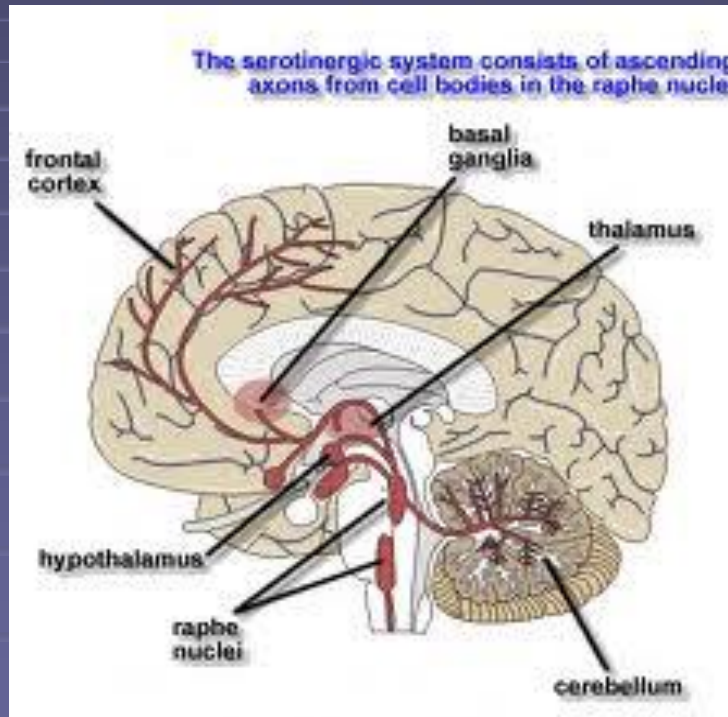
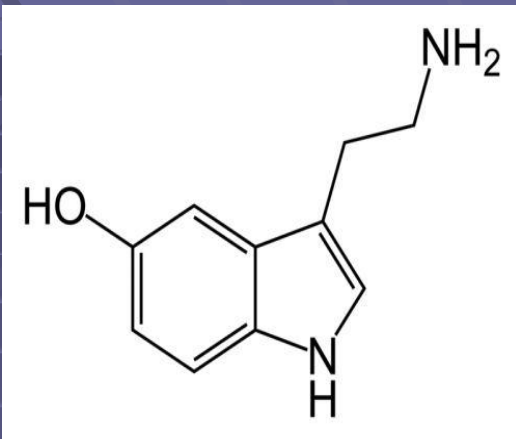
The Anorexic Gene:
Chromosome 1 a
Link to Disorder

R. Bragg 2017

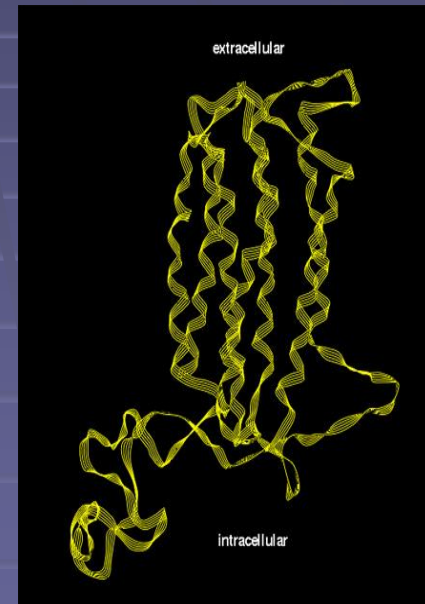
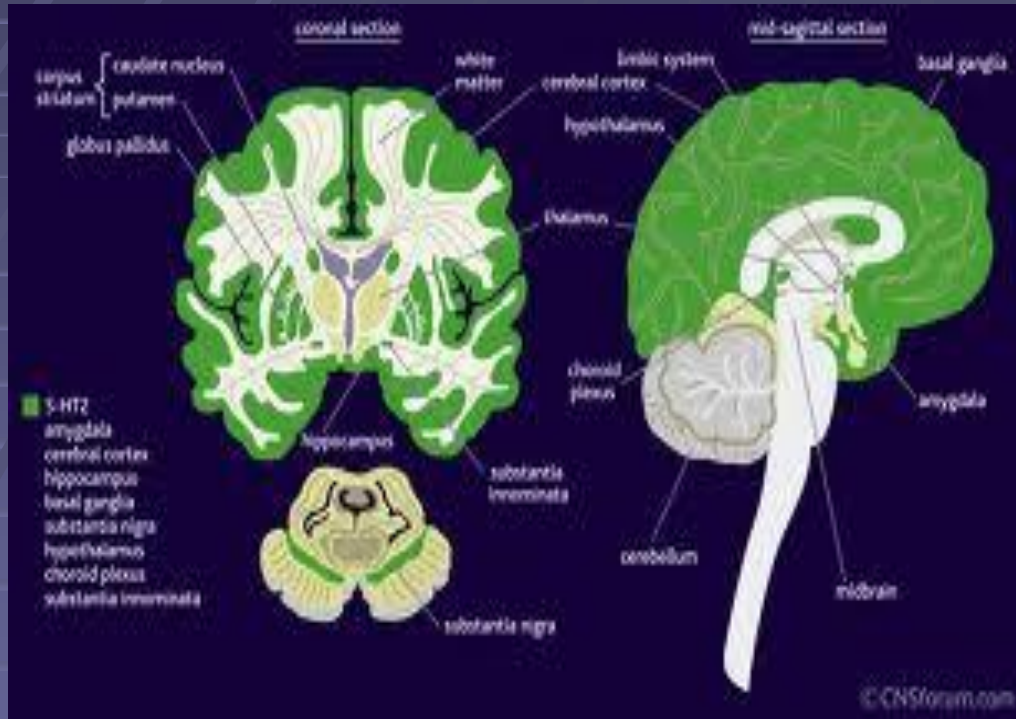


ISSN 0007-1626 CANADA \$7.95

Sistema Serotonérgico



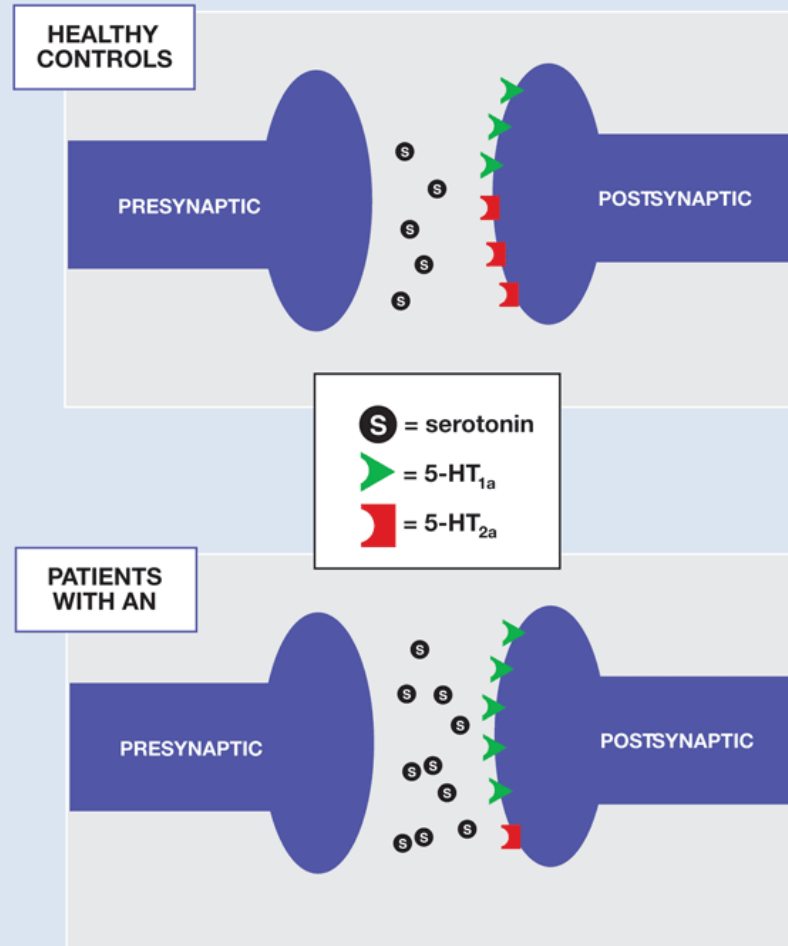
Sistema serotoninergico: recettori



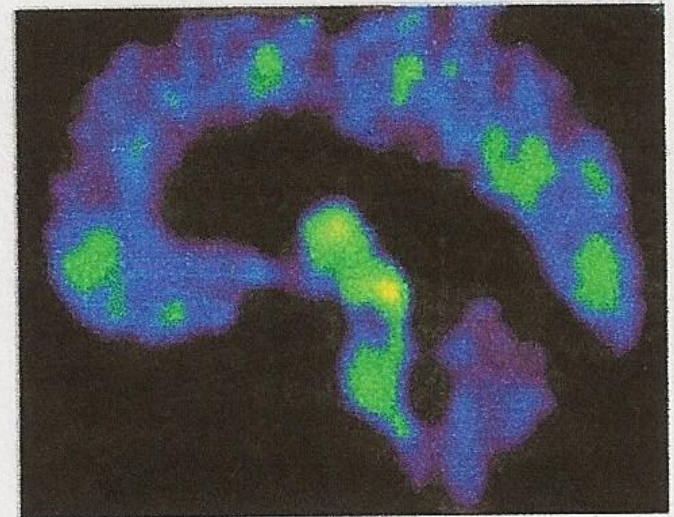
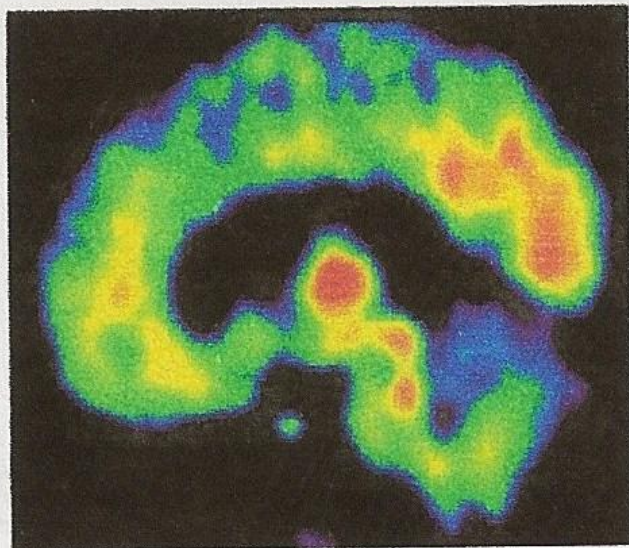
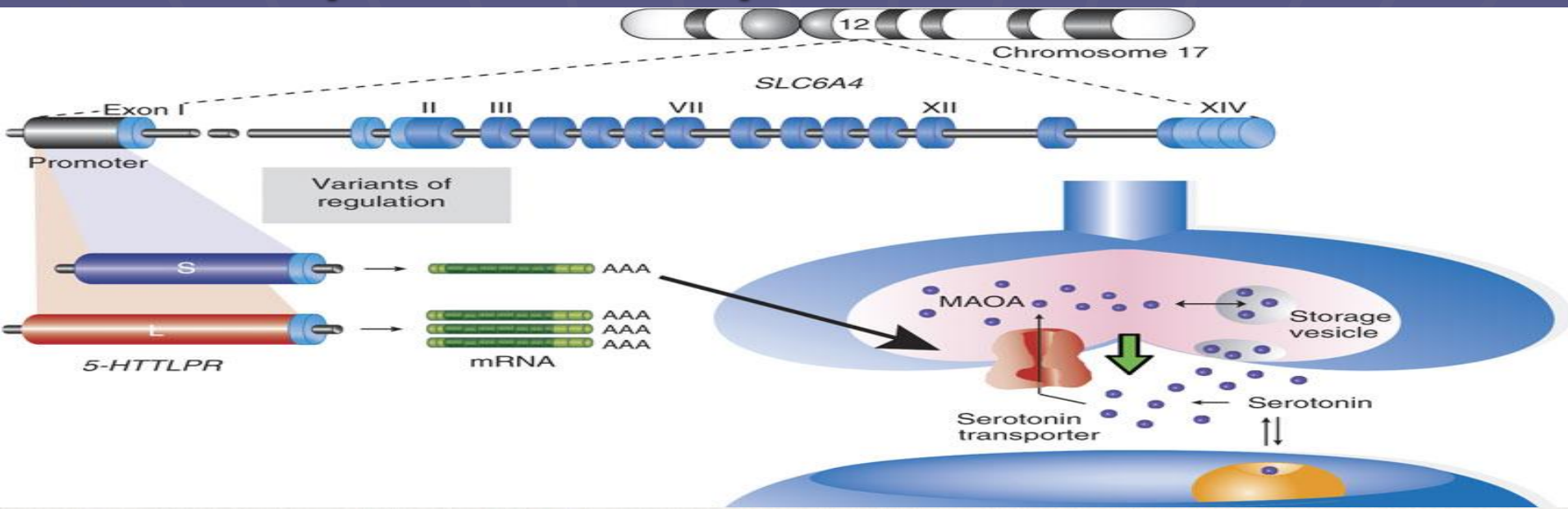
Figure

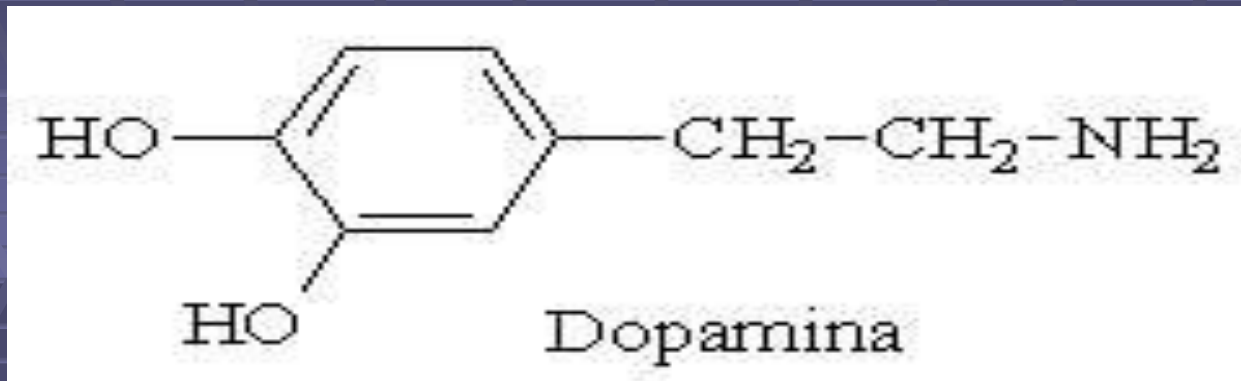
Serotonin metabolism in anorexia nervosa

Serotonin metabolism has been actively investigated in patients suffering from restricting-type anorexia nervosa (AN). Two factors are hypothesized to be present in patients vulnerable to the eating disorder. These include increased concentrations of extracellular serotonin, and alterations in serotonin receptor biology (illustrated as changes in receptor ratios, as shown below).



Trasportatore per la serotonina





- Aumento dell'attività mesolimbica e del nucleo accumbens
- Diminuzione dell'attività della corteccia prefrontale

Recettori dopaminergici

